



Nottingham Trent  
University





Nottingham Trent  
University

# International Pathways



**Choosing where to study is a life-changing decision – we're honoured that you're considering studying with us.**



Nottingham Trent  
University

# **This presentation will**

**Introduce you to NTU and the Nottingham Business School and our approach to Higher Education**

**Give you an insight into student life at NTU**

# WHY CHOOSE NTU?







# AN AWARD- WINNING UNIVERSITY LIKE NO OTHER



**University  
of the year  
2017**

*THE Awards 2017*



**Modern University  
of the year  
2018**

*The Times and Sunday Times  
Good University Guide*



**University  
of the year  
2019**

*The Guardian  
University Awards*



**Modern University  
of the year  
2023**

*The Times and Sunday Times  
Good University Guide*



**University of  
the year  
2023**

*Whatuni student choice awards*



A wide-angle photograph of Nottingham City Square at night. The square is illuminated by warm streetlights, and the background features the grand, classical architecture of the Nottingham City Hall, including its prominent dome and columns. In the foreground, several fountains are active, spraying water into the air. To the left, a row of historic buildings with shops like 'Five Guys' and 'Ladbrokes' is visible.

# NOTTINGHAM

# A STUDENT CITY



60,000 students



Home of English sport



Arts, culture, shopping and entertainment

**5th**  
best student  
city in the UK

(StudentCrowd 2022)



# Nottingham



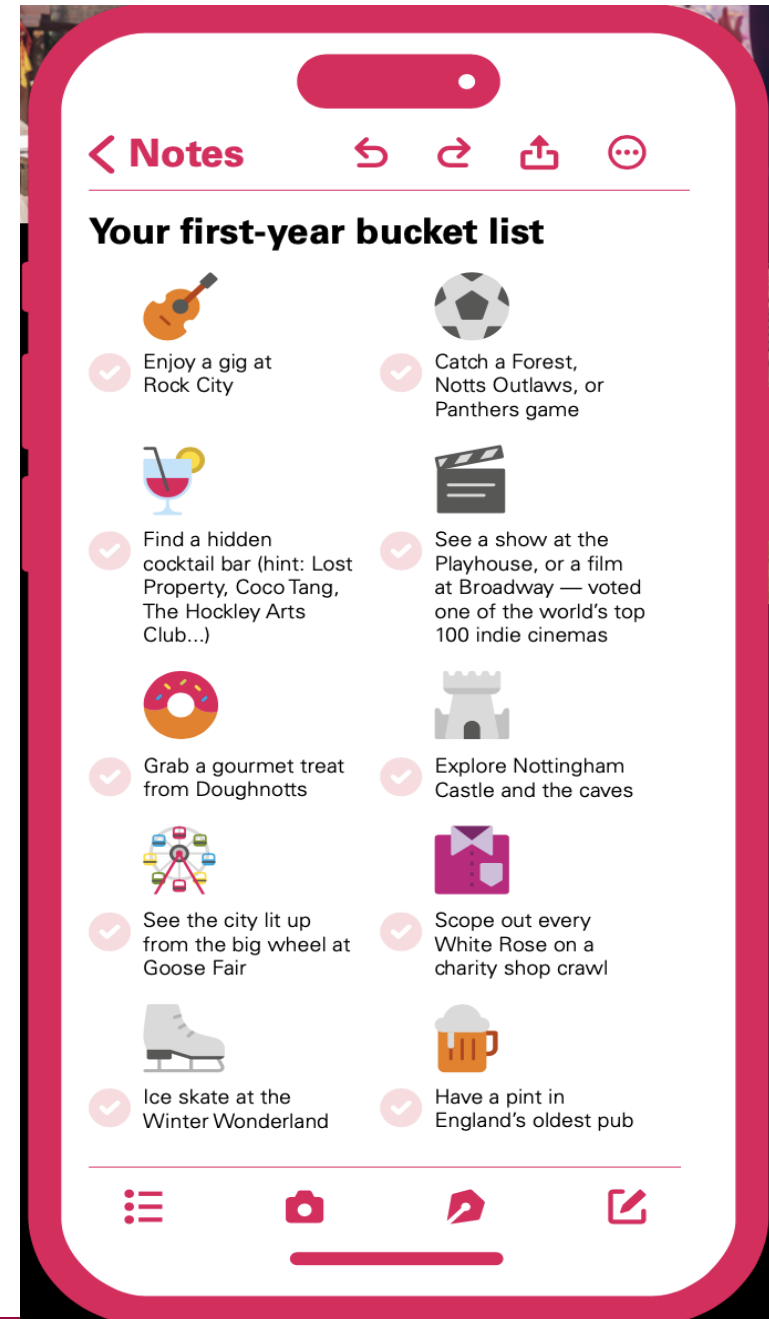
# Bucket List



**There's more to uni  
than lectures!**

Get a picture of what your  
new life could look like at:  
**[ntu.ac.uk/studentlife](https://ntu.ac.uk/studentlife)**

NTU







**A STUDENT  
EXPERIENCE**

**LIKE NO OTHER**



Global community



Music and culture



NTSU, societies and volunteering

**#1**  
**for student life and  
international study**

(Whatuni Student Choice Awards 2022)





# SUSTAINABLE CREDENTIALS



**1st Class for Sustainability in the UK**

(People and Planet League, 2022)



**2nd most Sustainable University in the World**

(UI GreenMetric World University Rankings 2022)



**3 Star Food Made Good Sustainability Rating**

(The Sustainable Restaurant Association)





# RE:SEARCH RE:IMAGINED



Research expertise



Collaboration between staff, students and subjects



Captivating podcasts

**83%**  
of NTU research  
rated 'world-  
leading'

(Research Excellence Framework 2021)

# City Campus

A cosmopolitan, bustling campus right in the city centre. Only five minutes' walk to the shops and all the excitement of a busy student city.



- Nottingham Business School
- Nottingham School of Art & Design
- School of Architecture, Design and the Built Environment
- Nottingham Law School
- School of Social Sciences
- Journalism and Media Hub
- Confetti Institute of Creative Technologies
- Nottingham Institute for Languages and Intercultural Communication (NILIC)
- Nottingham Trent International College (NTIC)

▲ Arkwright and Newton building, City Campus



# ACCOMMODATION AT NTU

## YOUR NEW HOME:



**Find your  
perfect place**

Check out all our  
accommodation options at:  
[ntu.ac.uk/accommodation](https://ntu.ac.uk/accommodation)

**NTU**



**Safety and security**



**A choice of en suite or  
shared facilities**



**Great locations on or  
near campus**



**Your utility bills and Wi-Fi  
included in your rent**



**Friendly Welcome reps who'll  
be on hand to help you settle in.**



### **Guaranteed accommodation**

We guarantee accommodation for first-year full-time undergraduate students in Nottingham. Your offer may include NTU-owned, partner and private accommodation.

(T&Cs apply).





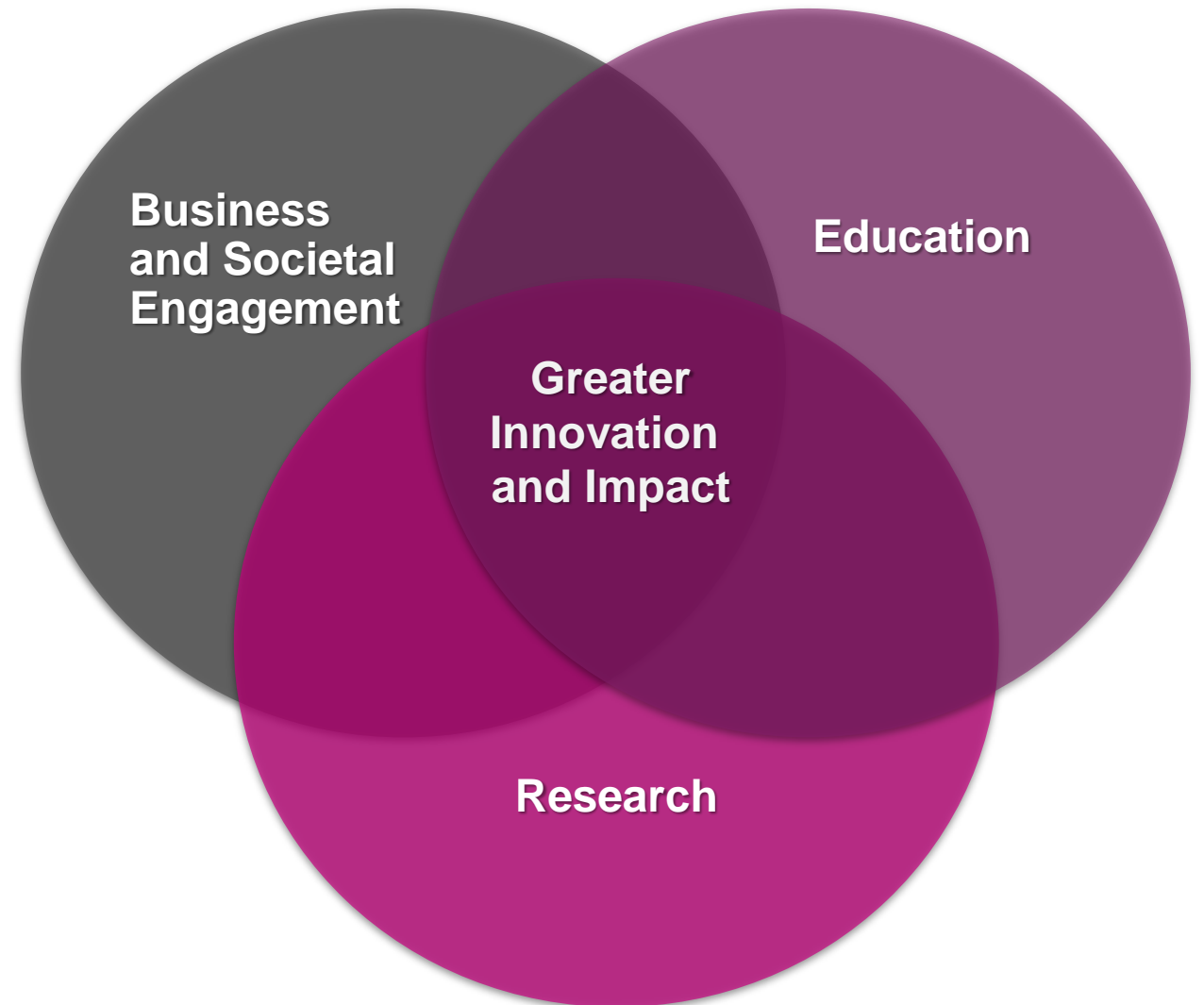
Welcome to  
**Nottingham Business School**



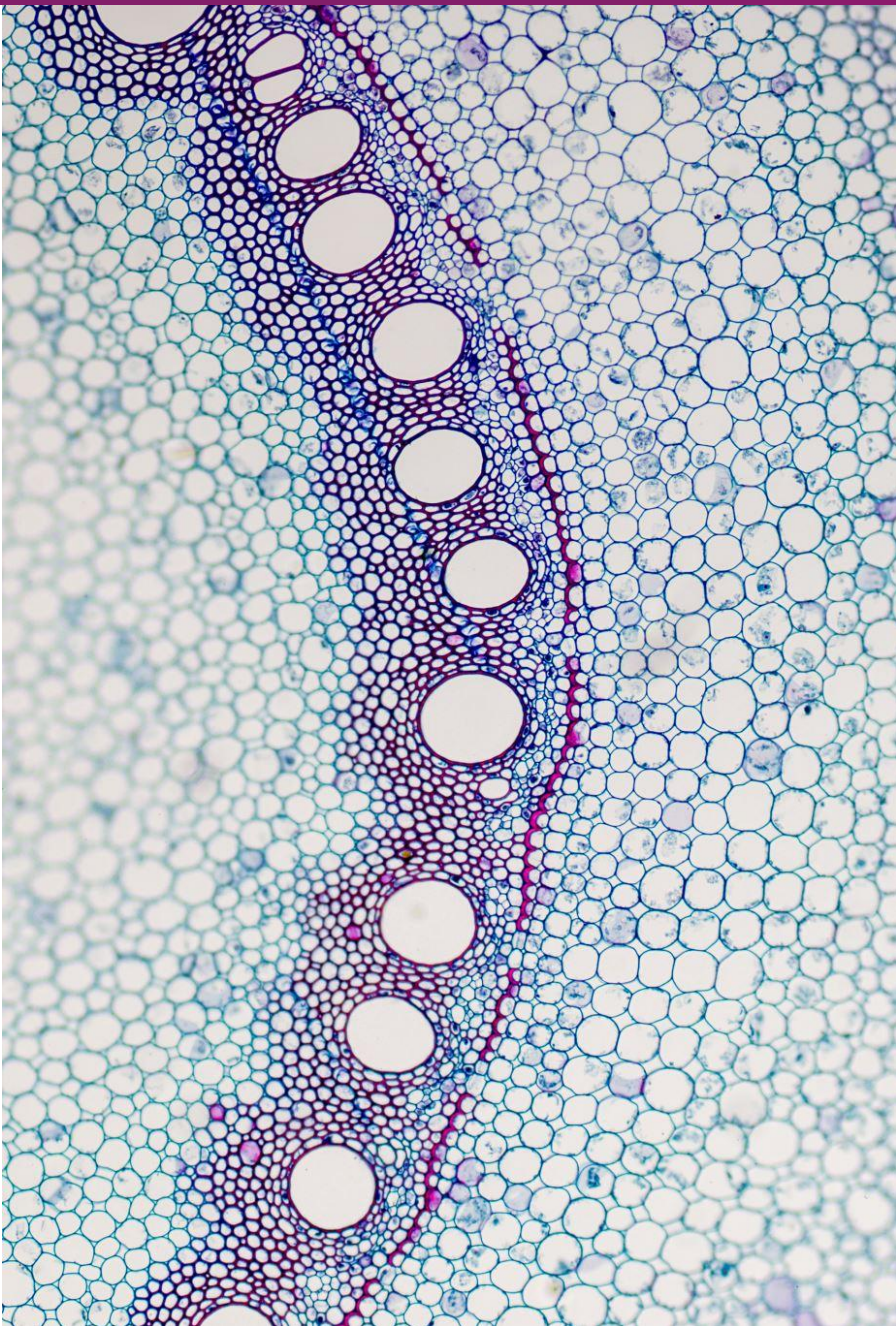
**Nottingham  
Business School**  
Nottingham Trent University

# Our philosophy

We deliver research and education that combines academic excellence with a positive impact on people, business and society.







# **NBS identity defined by**

- **Leaders in Experiential Learning**
- **Leaders in Personalisation**
- **Leaders in Responsible and Sustainable Business Research and Education**
- **Connection to Business**

# International accreditations







**A transformative learning experience**

# Experiential learning

Apply your learning to real-world challenges



Access placements, internships and industry visits.



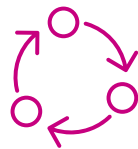
Study abroad, at one of our 90 partner universities.



Apply your learning to business challenges, consultancy and enterprise projects.



Explore your entrepreneurial side with an enterprise project.



Learning based on theory, practice, applied experience, observation and reflection.



Business simulations, case studies and a virtual learning environment.



# A powerful NBS Alumni network



# Personalised learning

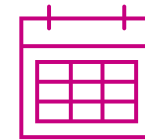
Thrive and excel by tailoring your learning experience



Choose unique study opportunities: Optional modules, study abroad, internships and enterprise projects.



A support network to help you work on your development areas and shape your study and career goals.



Dedicated programme of events to make friends and build your professional network.



Be matched with an alumni fellow for mentoring.



Weekly email with professional development opportunities.



Volunteer in the community, become a course rep, student mentor or student ambassador.





# Professional body partnerships



# Connections to business

**Gain the skills your future employers expect to see**



Your course curriculum is designed in conjunction with industry.



A regular programme of business leader lectures, and alumni talks.



Teaching staff with extensive industry experience.



50+ business leader podcasts, each giving insight and advice to NBS students.



Meet future employers at a regular programme of recruitment events.



Prepare for your next step with CV guidance, interview preparation and mock assessment centres.



# BUSINESS LEADERS LECTURE SERIES

- Monzo
- Experian
- Xerox
- Unilever
- The RAF
- Diageo
- Ford
- Toyota
- Fujitsu
- Boots
- The FA
- Santander



# A few of our recent Business Leader Lectures



## **Chris Townsend CBE**

Former Commercial Director of the London 2012  
Olympic and Paralympic Games



## **Polly Harrold and Wendy Whewell**

Senior Public Affairs and Public Policy Manager  
and Head of ESG & Climate Change for Corporate  
and Commercial Banking



## **Lucy Hagues MBE**

CEO of Capital One



## **Sue Hayes**

CEO of The Nottingham



## **Rob Barker**

Strategic Advisor at EGYM



Walgreens Boots Alliance

## **Ornella Barra**

COO of Walgreens Boots Alliance



# Discover the stories behind the leaders



Nottingham  
Business School  
Nottingham Trent University

Listen to our Business Leaders Podcast for leadership lessons, insights and advice from the network of Nottingham Business School.

 Listen now  
[ntu.ac.uk/businessleaders](https://ntu.ac.uk/businessleaders)



ROYAL  
AIR FORCE

Boots

Pentland

experian.

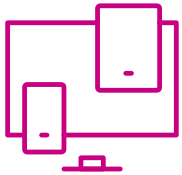
200°  
COFFEE

RALEIGH

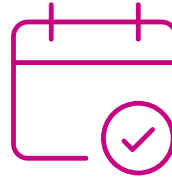
NOTTINGHAM  
PLAYHOUSE

Capital One

# Supporting your success



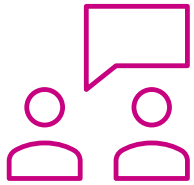
**NTU Student Dashboard** to help you and your tutors monitor your engagement with your studies



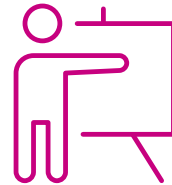
**MyNTU** app, giving you access to key information including your timetable



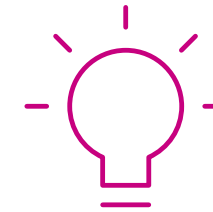
Online resources like Skills for Success and **NOW**, NTU's virtual learning environment



Peer-to-peer support from student mentors



One-to-one mentoring and personal tutors



Academic skills workshops



# Employability Promise

Our personal advice and strong focus on employability will get you ready to develop your career. We'll even support you after your studies for up to three years and offer you a paid internship opportunity if you're not in employment or further study 12 months after graduating.



Support from an award-winning employability service, for up to three years after graduation



100-240 hours of integrated work experience built into every course



Access to a global network of industry partners



Paid internship



Nottingham Trent  
University

# **BA (Hons) International Business Management [Top- up]**

30/04/2025

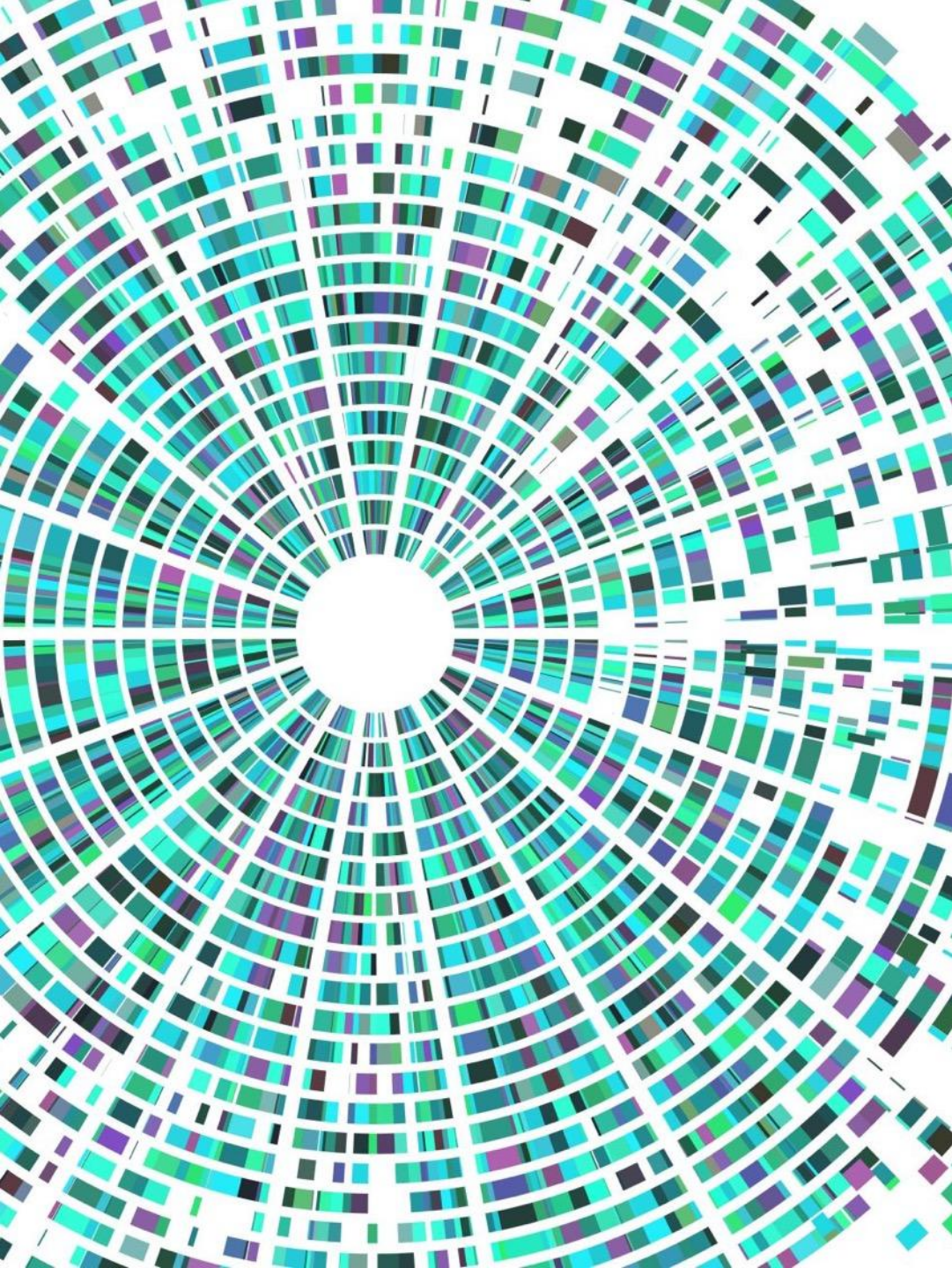




# The Course

- The **BA (Hons) in International Business Management** is a **high quality** comprehensive business study programme that will provide you with the **extensive knowledge of business theory** and with **managements skills** designed to meet the needs of ever-changing international business environment.





## Distinctive features of the course include:

- Extended induction and orientation arrangements
- A concern for intercultural exchange in the classroom
- The international experience and research areas of the faculty
- The involvement of visiting professors
- Teaching which focuses on the regional and global business environment
- An international perspective in all of the main functional areas
- International learning materials
- Opportunity to study a foreign language (and English as appropriate)
- Course Enhancement Activities (ie. company visit)
- Extra- curricular opportunities (University, School and Course levels)



# Teaching and Assessment

## How will I learn?

- Lectures (On demand and On campus)
- Highly interactive small group seminars (On campus)
- Workshops
- Group Work
- Experiential Learning
- Guest Lectures
- Independent Learning

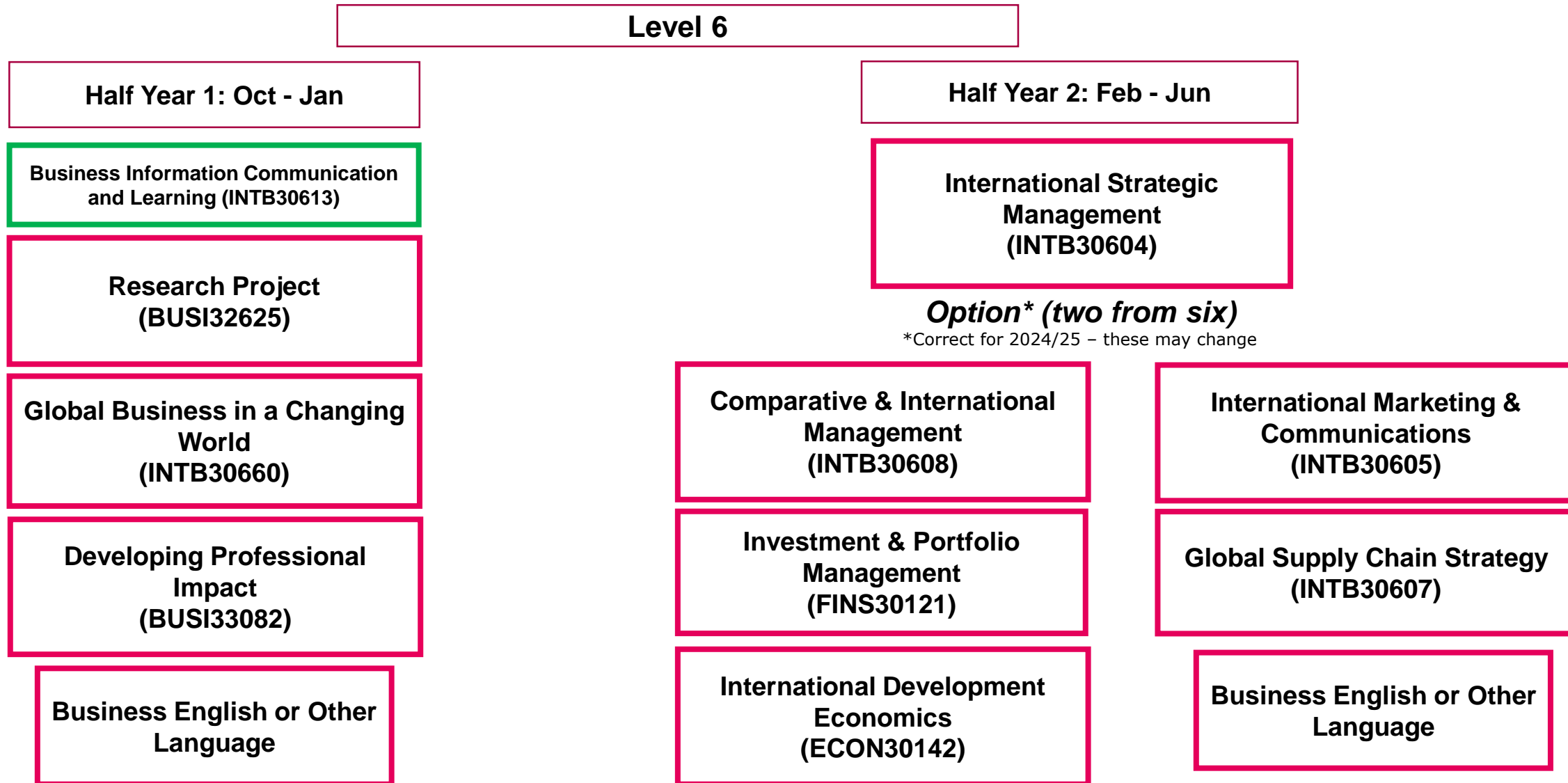
You will be assigned a personal academic tutor

## How will I be assessed?

- Essays
- Written Reports
- Group Presentations
- Research Projects
- On the day assessment



# BA Hons International Business Management [Top Up]



Language: (Arabic, Mandarin, French, German, Italian, Japanese, Spanish, Korean)

# Company visits





# Example of assessment: Group work, consultancy project

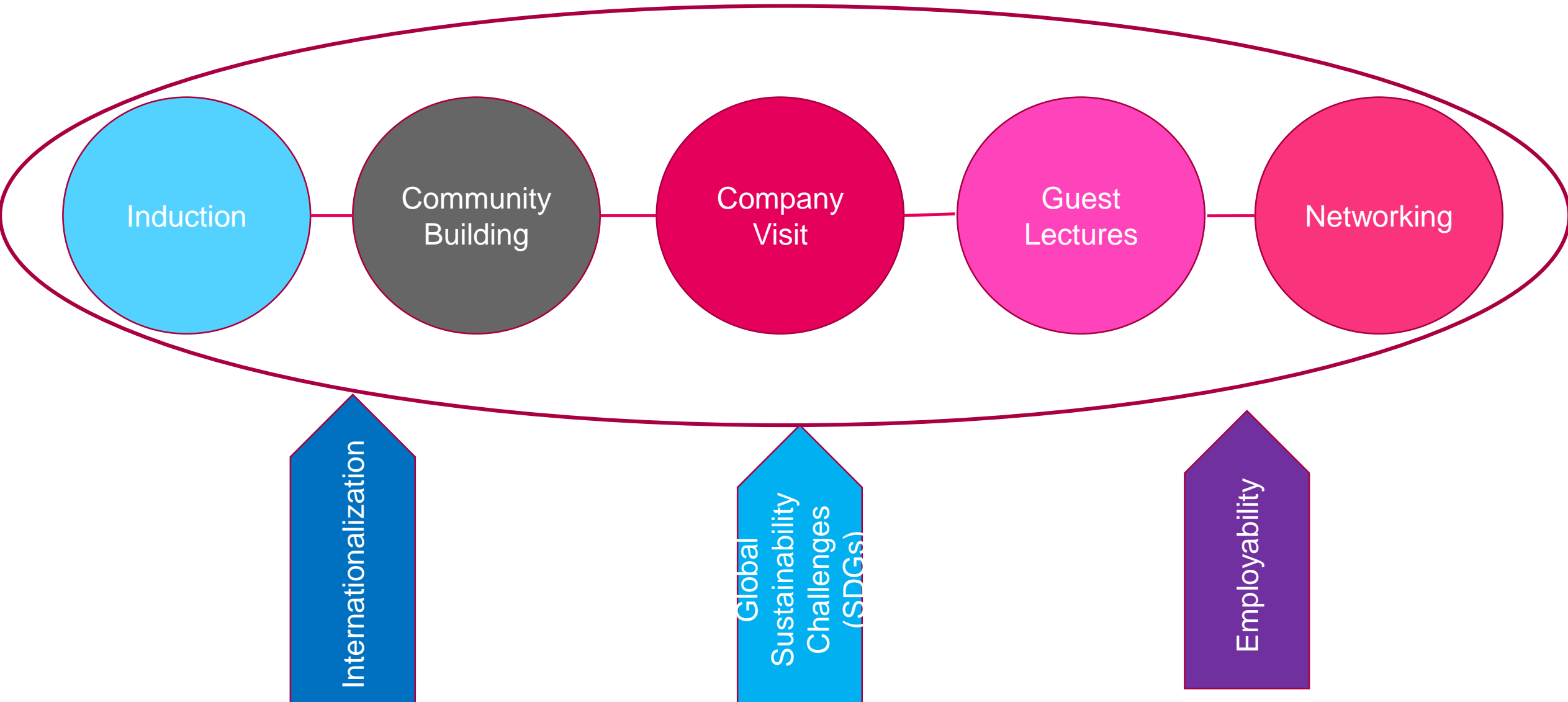






**Personalised Course Induction to support transition**

# BAIBM Extra- curricular Activities





# Example of extra- curricular activities



# BAIBM graduate 2022- Elio Mouton



- Extracurricular activities and continuous professional development
- Cultural experience and global outlook
- Career inspiration

Nottingham  
Business School  

---

Nottingham Trent University

# Facts and Figures

- Entry Requirements:
  - Successful completion of 3 years of 4-year UG degree (65% average)
  - IELTS 6.5 or equivalent
- Fees for 2025/26
  - £18,250
- Living Costs:
  - minimum £10,200 approx/year.
  - Partnership discount or scholarships available



# How to Apply?



Contact the  
**International  
Coordinator** at your  
home institution  
They have to nominate  
you

Fill in the online  
application on MS Form  
using the QR code

Accept your offer and  
complete your  
application online

# Applying for your Student Visa



- Once you have met all the conditions to be accepted on your course at NTU and paid your £6000 deposit, you will be issued with a CAS letter.
- Costs: Visa £490, mandatory health cover £776.
- You will need to show details of your acceptance onto a course, your offer letter and evidence of sufficient funding to support your education and living expenses while you are in the UK.
- When your Visa application has been considered, you will be issued with a temporary vignette valid for travel to the UK within 90 days only.
- It will be accompanied by a letter with instructions about the second stage.
- On arrival in the UK, you will have to collect your Biometric Residence Permit within 10 days of arrival in the UK - This is a plastic card with your photo, personal details and visa information
- **We recommend that you request collection of your BRP from NTU. Enter this code: 2HE392 into the "Alternative Location" field in the visa application form - [www.ntu.ac.uk/BRPcollection](http://www.ntu.ac.uk/BRPcollection)**



# Global Summer School

Visit [ntu.ac.uk/globalsummer](https://ntu.ac.uk/globalsummer) to find out more

July 2025, 2 or 4 weeks

*“Getting to work on projects with people from other nations is an absolutely amazing experience, much needed for future global citizens.”*

Kunwar Thapar, Design and Innovation in Business, 2022



Learn something new, meet friends from around the world and experience Nottingham.



## Choose your Block One Course

Block One courses run from 7 July to 18 July 2025



### Astronomy, Rocketry, and Space Science

Learn space science from an academic involved in designing the European Space Agency's SMILE satellite mission



### Cybercrime and Cybersecurity

Explore the history, nature, and patterns of cybercrime as well as its prevention and detection



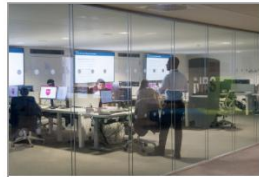
### Design and Innovation in Business

Find out more about the business case for design and creativity in the workplace



### English Language and Culture

Improve your English language skills and find out more about UK culture and history



### Financial Markets & Investments

Learn how to analyse financial securities and exploit market opportunities



### Global Fashion Branding and Design

Explore the link between the process of fashion design and the fashion industry today



### Language, Communication, and Playwriting

Explore English language learning and intercultural communication in all its forms



### Music Production

Record, compose, produce and mix in our industry-standard music studios



### Neurodiversity from Brain to Behaviour

Learn how neurodiversity can lead to differences in everyday life behaviour



### Photography and Heritage

Learn the necessary skills to capture the identity of a place in your photographs



### Podcast Production: from brainwave to airwave

Get an introduction to the best practices of developing and producing an original podcast



### Serious and Organised Crime

Explore the motivations and structures surrounding serious and organised crimes

## Choose your Block Two course

Block Two courses run from 21 July to 1 August 2025



### Architectural History and Drawing the City

Explore the concept of place through drawing, illustration, and urban landscape



### Becoming an Entrepreneurial Citizen: Exploring Competencies for life and business

Learn to act upon opportunities and manage dynamic careers



### Crime Investigation

Learn crime investigation techniques such as evidence gathering and how to manage them



### Design History in a Global Context

Ignite your passion for design and embark on a transformative learning experience



### Digital Marketing and Communication for the Creative Industries

Explore the fast-paced and disruptive digital marketing and communications environment



### English Language and Culture

Improve your English language skills and find out more about UK culture and history



### Homelessness and Substance Misuse: Multi-discipline Interventions

Learn how multi-disciplinary working can deliver better outcomes for these vulnerable groups



### Media and Crime

Learn how crime news is constructed and delve into topics like fake news and crime fiction



### Smart Agriculture and Future Crops

Learn about precision and vertical agricultural and future crop technologies



### Well-being Masterclass: Discovering and Applying the Science of Positive Psychology

Explore the philosophical and practical foundations of positive psychology

# Entry Requirements and Fees

- At least 1-year of University study
- **IELTS 6** or equivalent (5.5 for English/Culture)
- **One course (2 weeks) standard fee:** £1,200\*
- **One course early-bird discount:** £1,100\* (if you book and pay for your course by 30 April)

\*Except for *Smart Agriculture and Future Crop*: £1,510 for standard fee or £1,410 with early-bird discount.

- **Two courses (4 weeks) special fee:** £2,000\*\*

\*\*If *Smart Agriculture and Future Crops* is chosen in Block Two, then the fee will increase to £2,310.

- **Accommodation:** £484 for two weeks and £968 for four weeks







Visit our parents and family web page for information on:

- International Office regional teams
- Student support and making friends
- Safety on campus
- Health and wellbeing (NHS)
- Living in Nottingham
- Faith
- Application and travel advice
- Video tour of NTU accommodation



[Chris.crabot@ntu.ac.uk](mailto:Chris.crabot@ntu.ac.uk)